

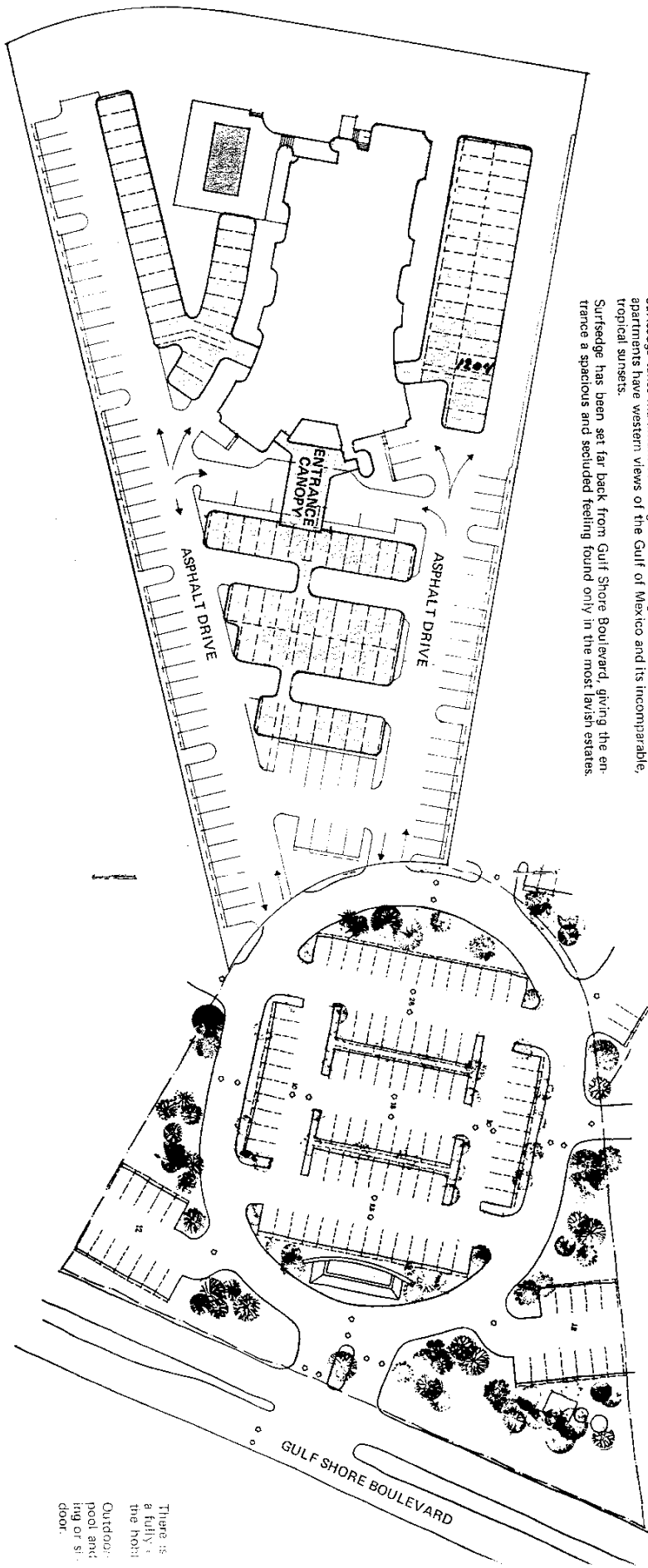
SURFSEDGE

NAPLES-ON-THE-GULF FLORIDA

Surfedge is located directly on the Gulf of Mexico, between two spacious, park-like common areas.

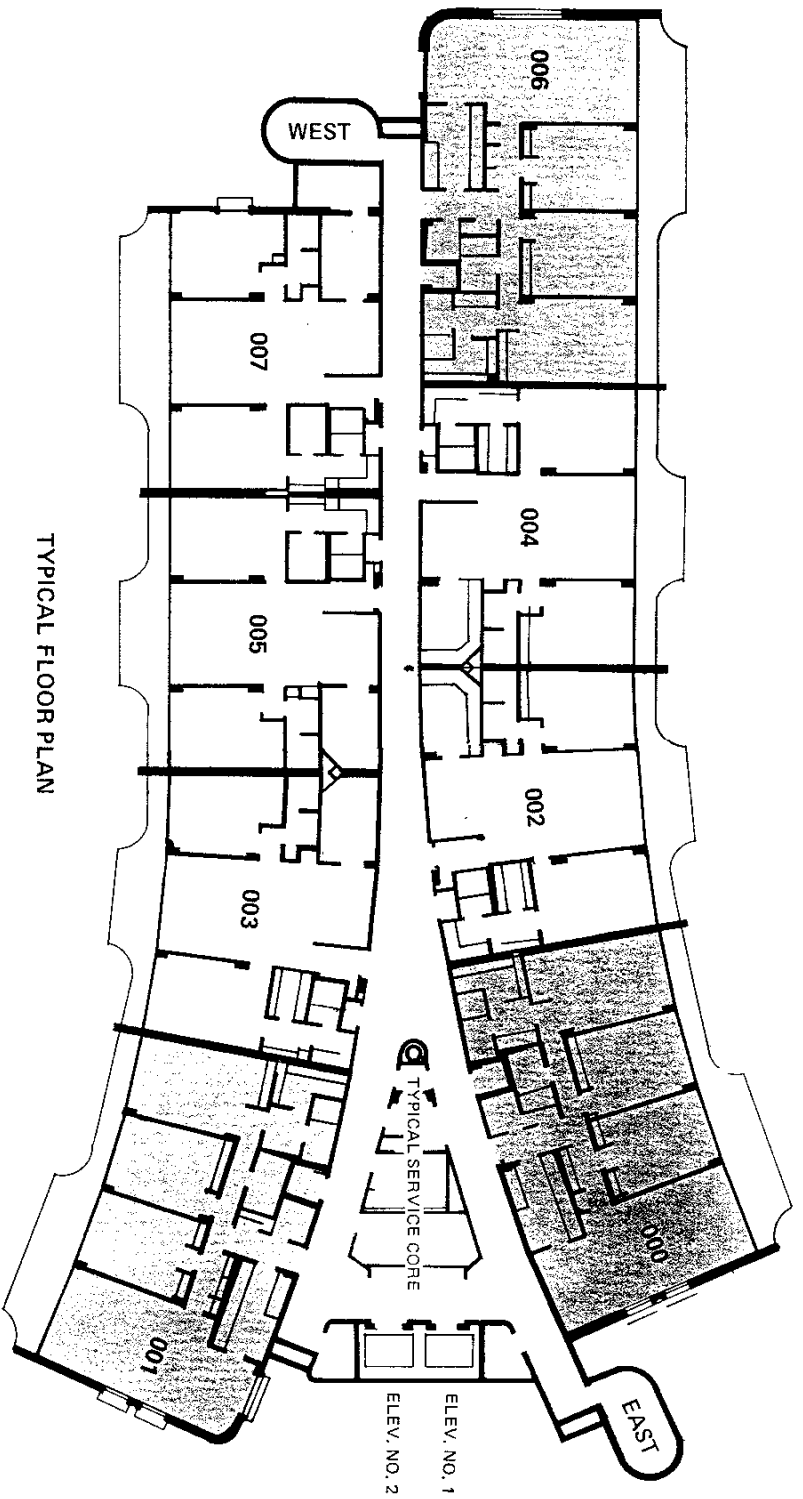
Surfedge takes maximum advantage of its setting and its 4% acre site. All apartments have western views of the Gulf of Mexico and its incomparable, tropical sunsets.

Surfedge has been set far back from Gulf Shore Boulevard, giving the entrance a spacious and secluded feeling found only in the most lavish estates.



There is a fully equipped outdoor pool and swimming pool area.

 SURFEDGE BEACH PLANTING
 POOL
 COVERED PARKING
 DRIVE



TYPICAL FLOOR PLAN

SURFSEEDGE DOES OFFER MORE!

In a setting such as Surfseedge, you would expect to find nothing less than the highest quality, imagination, convenience and careful, thoughtful planning.

On each floor, enjoy the unique Surfseedge view, not only from the residences, but from glassed corridor ends, which are equipped with self-watering planters.

Each floor of Surfseedge has a fully equipped laundry room and storage locker for each residence.

Transit to each residence is swift and sure aboard high speed electric elevators with their own standby electrical generator in case of power failure. The generator in addition has sufficient capacity to power the water pressure pumps, fire protection pumps and exit lights.

Each residents' individually controlled air-conditioning equipment and hot water heater is accessible from the corridor for ease of maintenance. This design also provides maximum sound-proofing.

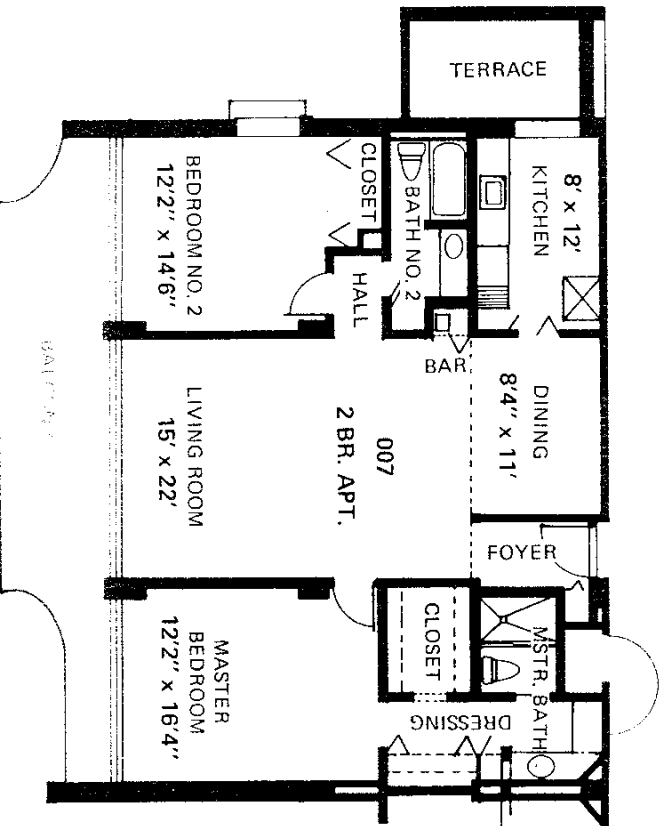
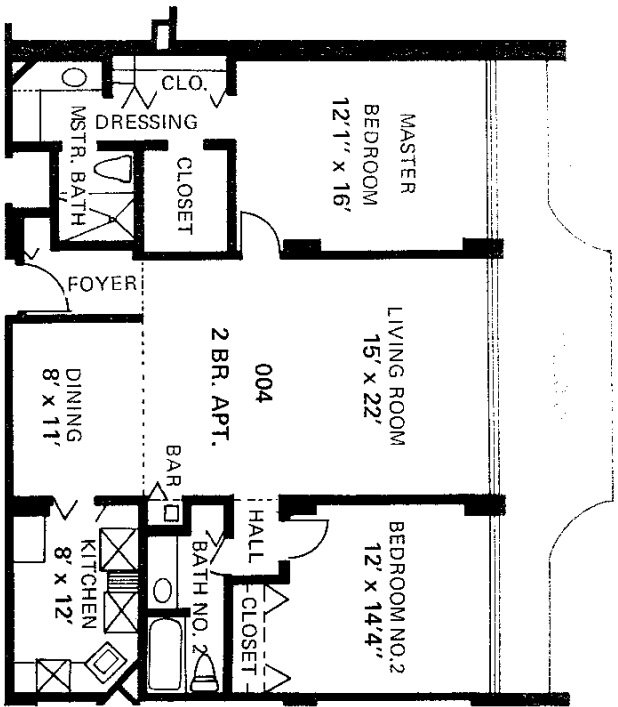
Every kitchen is equipped with a breakfast area, pantry, a chopping block, dishwasher, disposal, refrigerator with ice maker, a self cleaning oven and range with hood to take cooking odors to the outside.

Balconies run the entire length of each residence, with access from all bedrooms and the living room.

Each residence has a separate entrance foyer, dining area, and built in wet bar.

Each residence of course has the benefit of condominium ownership and title insurance.

SURFSEEDGE

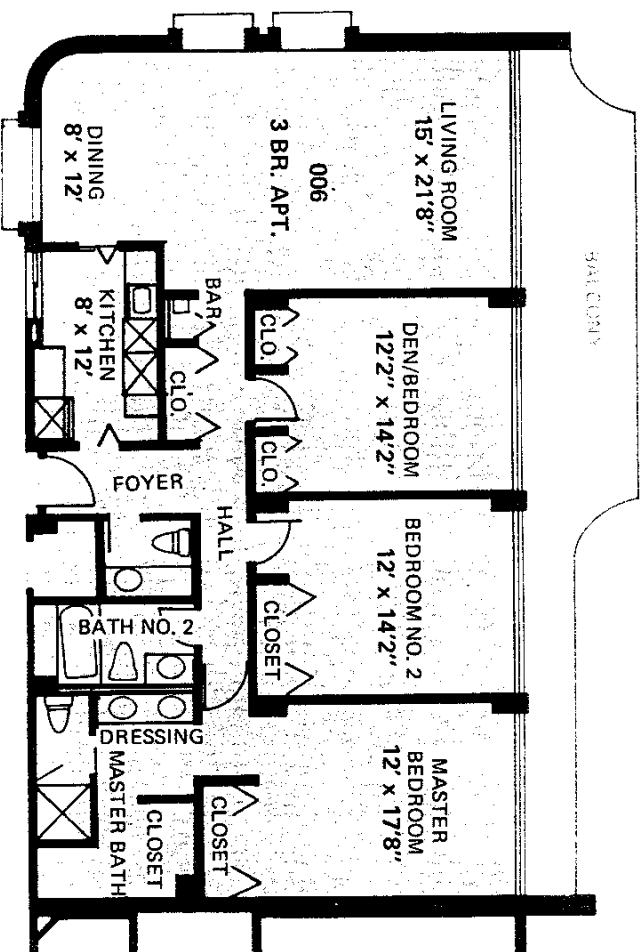


PLAN 004:
2 BR., 2 Bath

Here is two bedroom elegance with the accent on spaciousness and view. Balconies and glass run the full length of the unit. All rooms are large including the two baths, each with a linen closet! Notice the "his" and "her" closet in the Master Bathroom along with a make-up vanity area.

PLAN 007:
2 BR. - 2 Bath, Corner

This corner twin bedroom unit takes maximum advantage of its location with a large window facing directly on to the Gulf of Mexico end adding a terrace off the breakfast area looking directly on the beach!



PLAN 006:
Three bedrooms, two and one half baths

This three bedroom residence is an architect's dream! With windows in all major rooms, it is truly an estate in the sky. Notice the large breakfast area, where you overlook the Gulf of Mexico, and the living-in dining room area with three walls of glass, giving a 270 degree view of the beach and gulf.

DIMENSIONS MAY VARY. OTHER FLOOR PLANS WILL VARY IN SIZE AND SHAPE.