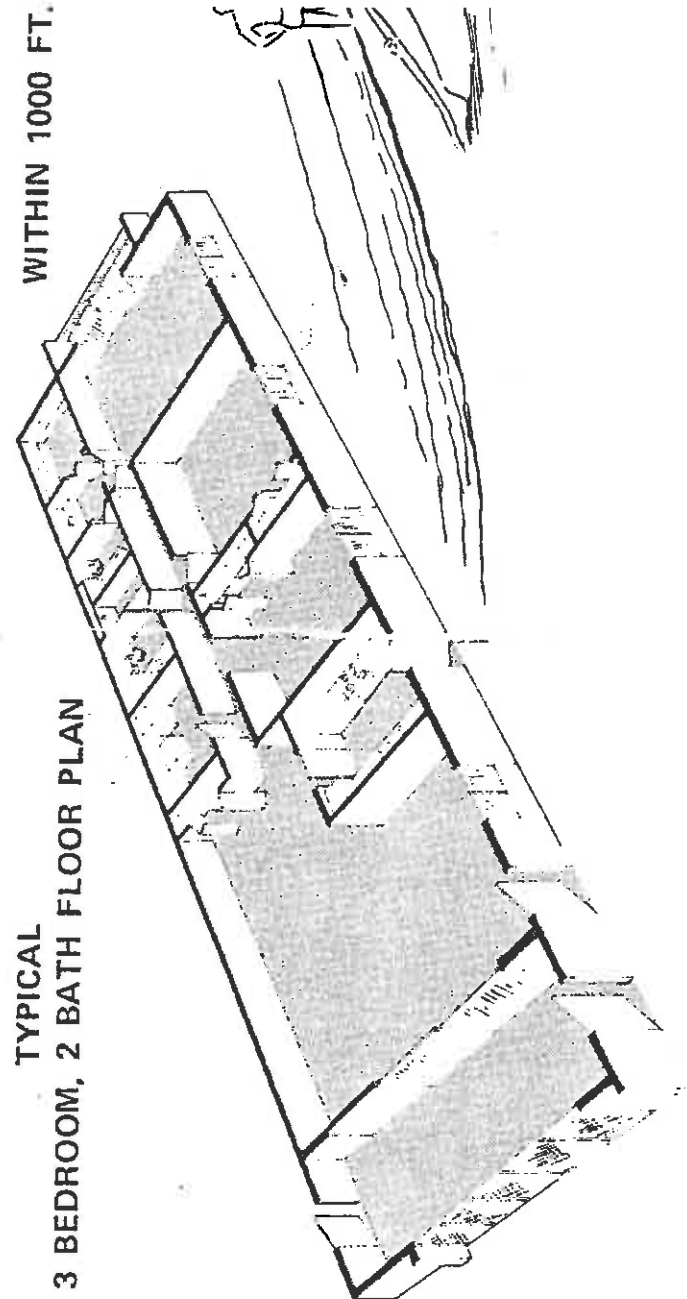


**TYPICAL  
3 BEDROOM, 2 BATH FLOOR PLAN**

**WITHIN 1000 FT.**

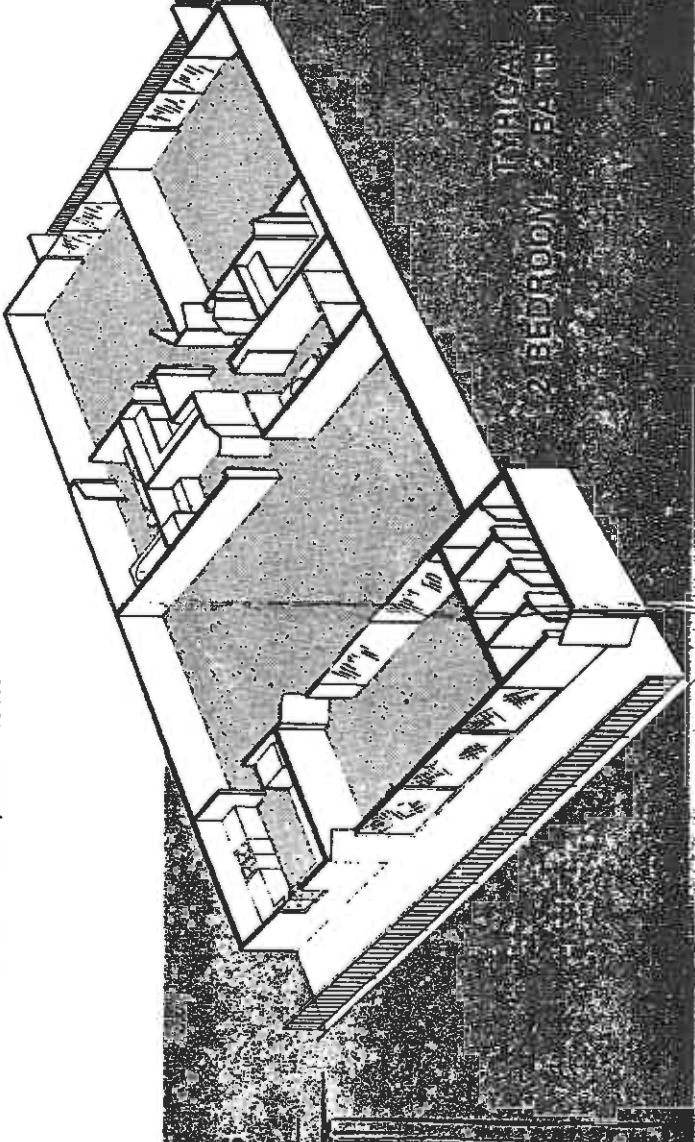
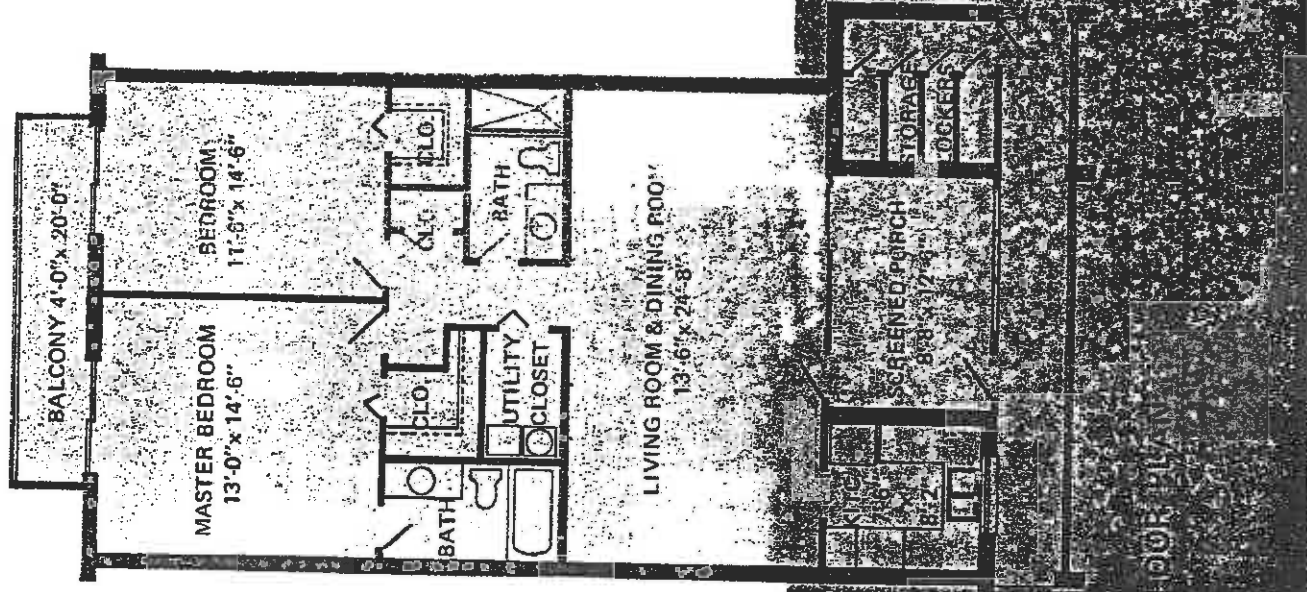


- Pool-side Chickee with Bar and Sauna Bath.
- Outstanding Views of Moorings Bay.
- Large Heated Pool.
- Individual Air Conditioning and Heating.
- Washer-Dryer Combination each Apartment.
- 15 cu. ft. Refrigerator with Icemaker.
- Self-cleaning Oven.
- Disposal.
- Trash Compactor.
- Dishwasher.
- All Kitchens with Outside Views and Ventilation.
- Screened Porches.
- Balcony from Bedroom above Ground Floor.
- 2 Phone Outlets each Apartment.
  - Nearly an acre of Tropical Landscape; open spaces and Courtyard.
  - Dimensions, Details & Conditions may vary slightly from artist presentation.
- 2 TV Outlets
- Storage Lockers
- 3 Elevators
- Formica Countertops
- Formica Veneer
- Bath Walls
- Re-inforced Concrete
- Fire and Smoke Protection
- 2 Parking Spaces
- Resident Network
- Modest Maintenance Fees
- Solar Grey Exterior
- Access to Amenities

*Apartment 3000 - 1100 sq ft*

1 of spacious apartment residences . . . all with spectacular Moorings  
 teriors are completely climate-controlled and designed for fine living  
 residence features large screened porches . . . bringing in the natural  
 ay. The large heated pool, sauna, and the sparkling fountain sur-  
 ng assures total relaxation.

2 limits your responsibility to your own residence only, with a  
 ht to sell, rent or bequeath at will, subject only to the Condominium  
 nterest and taxes are deductible with the same tax advantage of a  
 orida's Homestead Exemption Law.



TYPICAL 2 BEDROOM 2 BATH FLOOR PLAN