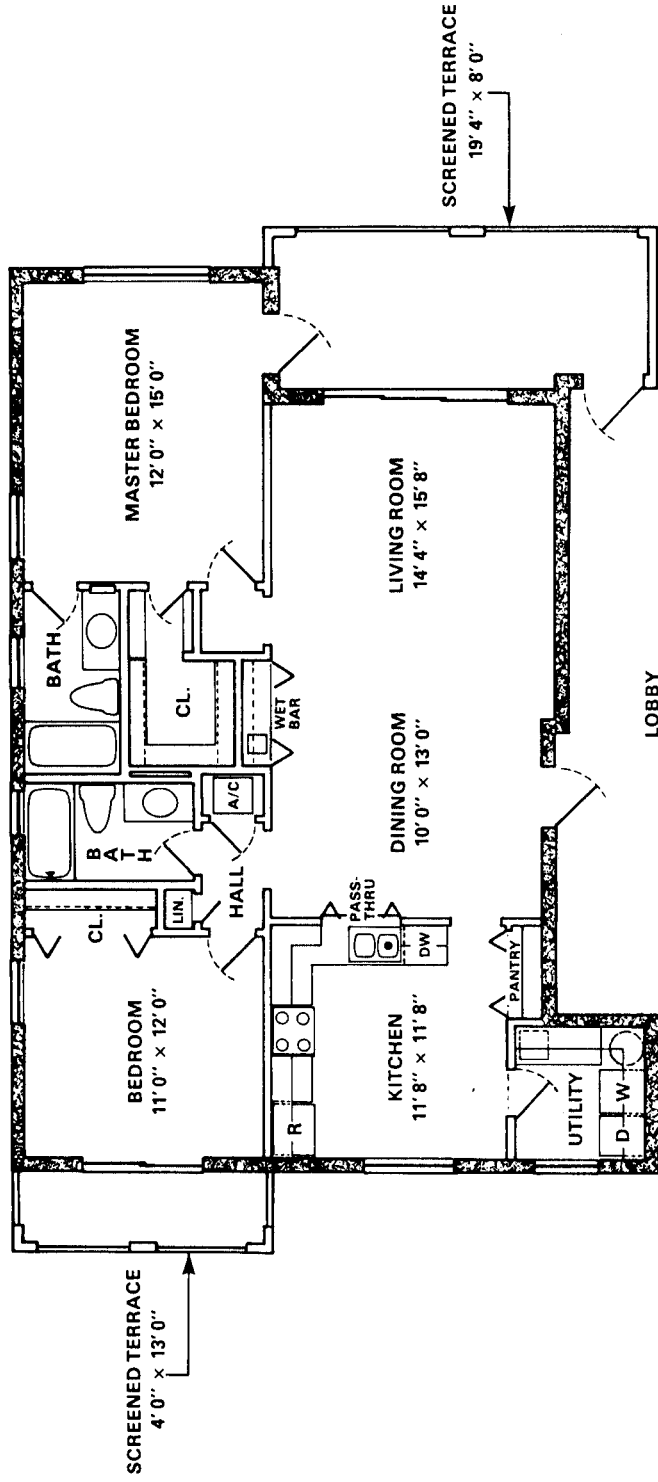


SUNSET BAY BAYSIDE



TYPICAL FLOOR PLAN

SUNSET BAY BAYSIDE offers a four-story elevated structure with six units; two per floor.

The first floor has a secured lobby, a club room with a full kitchen, rest rooms, a pool with a large patio, shower and some covered parking.

Each apartment has 1206 square feet of air conditioned area and 204 square feet of screened terrace area with a beautiful water view.

Living Room, 14'4" x 15'8" with triple glass sliding door opening onto an 8' x 19'4" screened terrace overlooking the marina on the bay.

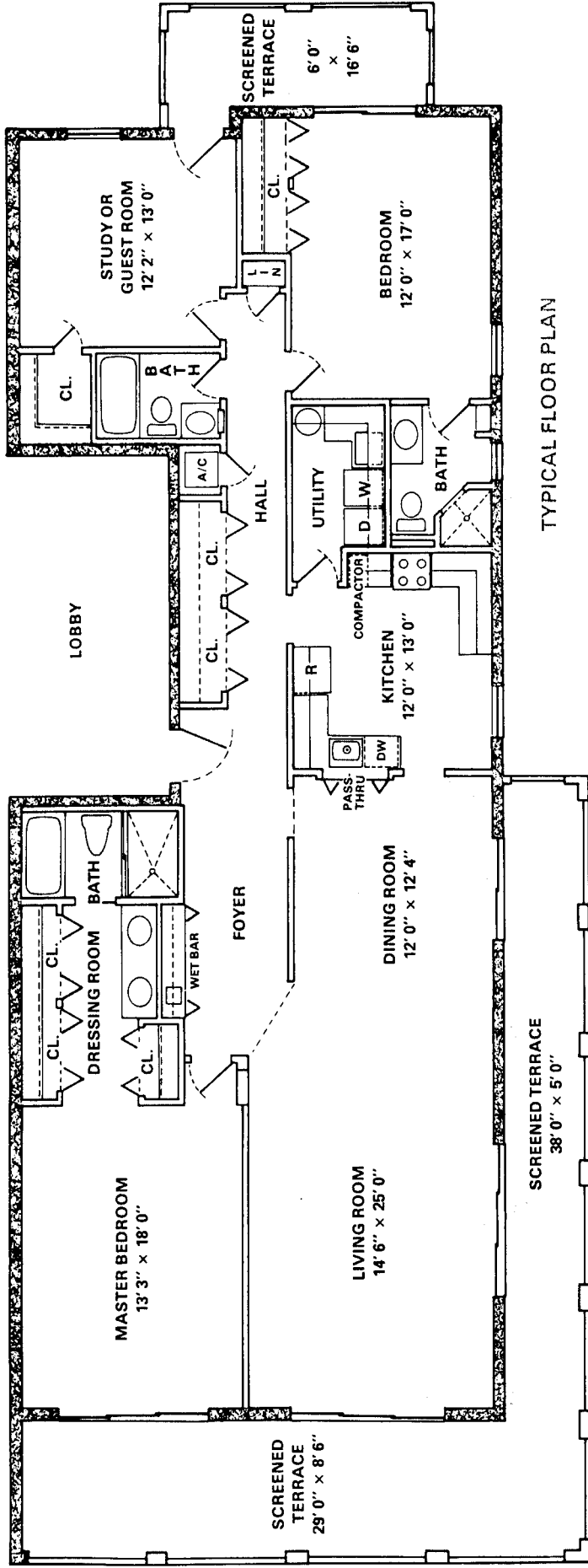
Dining Room, 10' x 13' off the living room with a wet bar and a pass-thru to the kitchen.

Master Bedroom, 12' x 15' with a huge walk-in closet, full bath and door opening onto an 8' x 19'4" screened terrace overlooking the marina on the bay.

Bedroom, 12' x 11' with full bath and huge closet with private 4' x 13' screened terrace.

Kitchen, 11'8" x 11'8"; full service with the latest in appliances including a huge laundry/pantry fully equipped.

SUNSET BAY GULFSIDE



TYPICAL FLOOR PLAN

SUNSET BAY GULFSIDE offers a seven-story elevated structure with twelve units, two per floor.

The first floor has a secured lobby, restrooms, shower, and oversized storage rooms for each apartment as well as some covered parking.

The privacy of only two units per floor eliminates the need for extensive corridor area and allows for greater security. Each apartment covers 2027 square feet of air conditioned area plus 580 square feet of wrap-around screened terraces with panoramic vistas of the Gulf as well as the Bay.

Spacious rooms are the keynote at Sunset Bay:

Living Room, 25' x 14'6" with triple sliding glass doors to a screened terrace.

Dining Room, 12' x 12'4" opening onto a screened terrace for outside dining.

Kitchen, 12' x 13', full service with the latest in appliances including a huge laundry/pantry fully equipped.

Bedrooms, 12' x 17', 12'2" x 13', and 18' x 13'3", all having full baths and screened terraces with a water view. The Master Suite has a full bath as well as stall shower, a dressing room with a double sink and vanity, double walk-in closets and a window wall that opens onto a screened terrace which overlooks the Gulf.